

Type: P40

HYDRAULIC DIRECTIONAL CONTROL VALVES



Description

For starting, controlling and stopping the working fluid between the generator of pressured flow, the consumers and the Tank

Specifications:

1. Valve monoblock	
2. Mounting	2 bolts M8
3. Pressure connections	internal thread
4. Ambient temperature	-40C...+60C
5. Pressure medium	mineral oil based hydraulic oil
6. Viskosity	12...800 mm ² /s permissible range 20...100 mm ² /s recommended range
7. Fluid temperature	- 15C...+80C
8. Filtration	Oil contamination 10 to NAS1638
9. Max. operating pressure max. bar	P = 250 bar T = 50 bar A, B = 300 bar
10. Leakage (A, B – T)	15 cm ³ /min at 120 bar
11. Nominal flow	40 l/min (see “operating” diagram)
12. Spool stroke	± 6 mm
13. Actuating force	< 200 N in spool axis direction

directional control valve P40

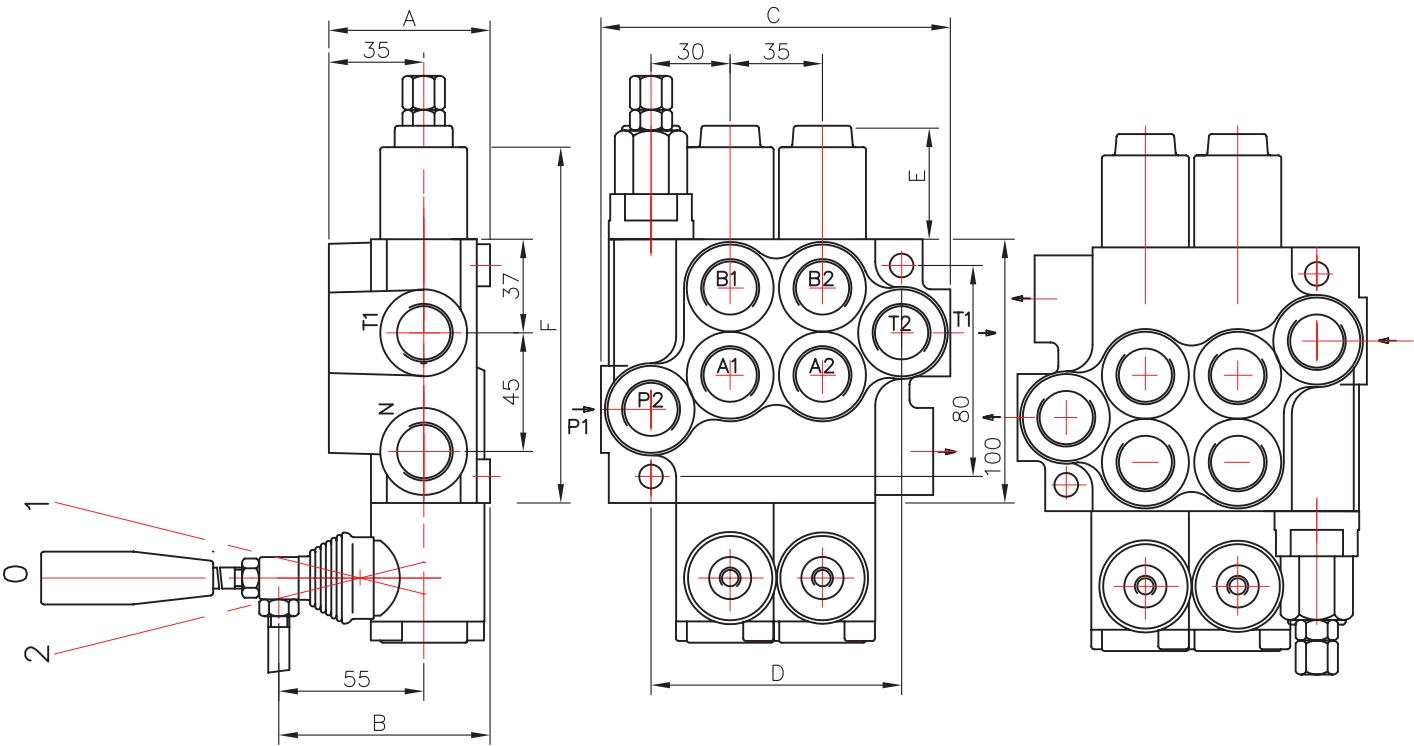


Table 1

	A	B	C	D	P1	P2	T1	T2
P40	60	80	85	60	+	-	+	-
02P40	60	80	129	97	+	+	+	+
03P40	60	80	164	132	+	+	+	+
04P40	60	80	199	167	+	+	+	+
05P40	60	80	234	202	+	+	+	+
06P40	60	80	269	237	+	+	+	+
07P40	60	80	304	272	+	+	+	+
2P40	60	80	129	97	+	+	+	+
3P40	60	80	164	132	+	+	+	+
4P40	60	80	199	167	+	+	+	+

Table 2

spool control фиксация золотника	E	F
1; 4; 5; 6; 7; 8; 9; 10; 11;	40	193
2; 3;	72	225
16	+	+

0
block with common check valve

2
number of spools

P40
directional control valve type ...

R
inlet high pressure – right

1
way of distribution/parallel or

A 1
first spool distribution type

A 1
spool control/detend and ets.

1
second scool distribution type

1
spool control/detend and estr

G
ports /treads

KZ1
general operation feature

T
with "teton"

H
operation feature /pneumatic

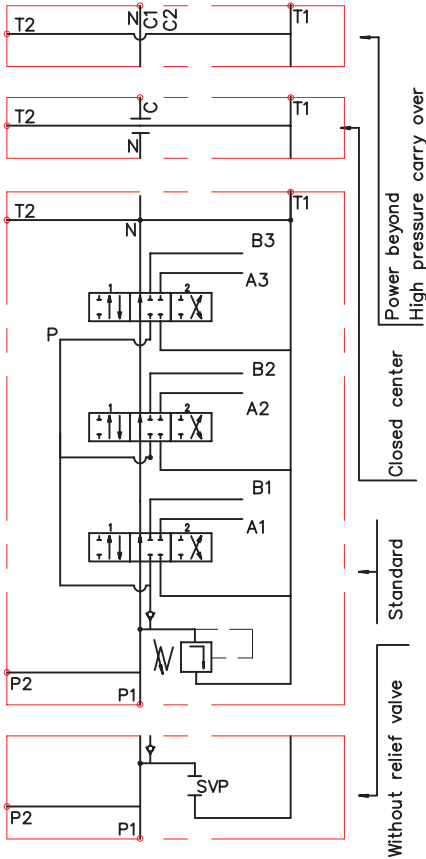
E
with electric switch

C2
high pressure carry over

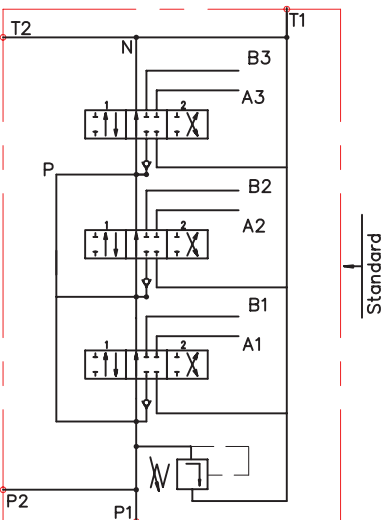
11
connection ports in use

directional control valve P40

03P40 1A1A1A1



3P40 1A1A1A1



3P40 2A1A1A1

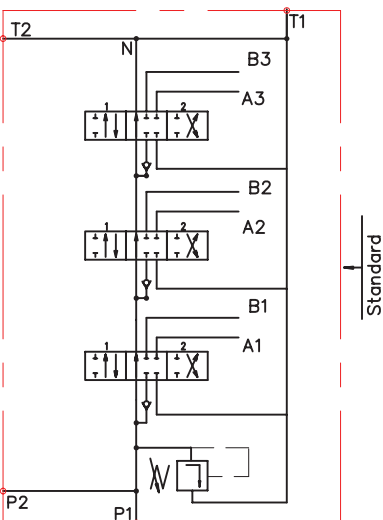


Table 3

code	Number of spools
01, 1	1
02, 2	2
03, 3	3

ets.

Table 5

code	spool type
A	
B	
C	
D	
E	
F	
G	
H	
M	
N	
O	
P	
Q	
R	
S	
T	
* K	

(dy8)

** L	
------	--

(dy8)

Table 4

code	way of distribution
1	parallel
2	tandem(series parallel)

Table 6

code	spool control
1	
2	
3	
4	
5	
6	
7	
8	
9	
10	
11	

* 13	
* 16	

** 13R	
** 12	

Table 7

code	incorporated microswitch
E	<div> <p>type</p> <p>Omron-V 165 I C5</p> </div>

Table 8

code	operation feature
P	<p>on-off pneumatic control; 5-10 bar ; ports G1/4</p>
H	<p>on-off hydraulic control ; pn = 5 - 20 bar ; ports G1/4</p>

directional control valve P40

P40

Table 9

code	ports (treads)			
	P	A ; B	T	N
M	M22x1.5	M18x1.5	M22x1.5	M22x1.5
G	G1/2	G3/8	G1/2	G1/2
S	7/8-14UNF	3/4-16UNF	7/8-14UNF	7/8-14UNF

kind of hand control ;

Table 10

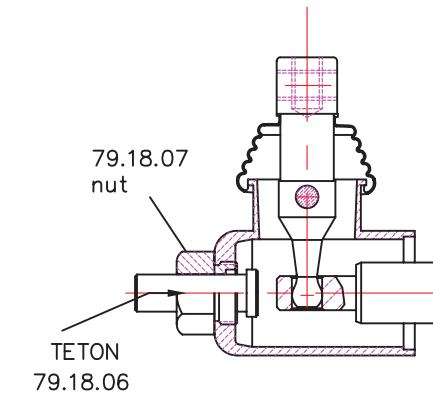
code	feature	code	feature	code	feature
KZ		KY		KI	
KZ1		KY1		KI1	
KZ0		KY0		KI0	
KZ01		KY01		KI01	
—	without hand control				

Table 11

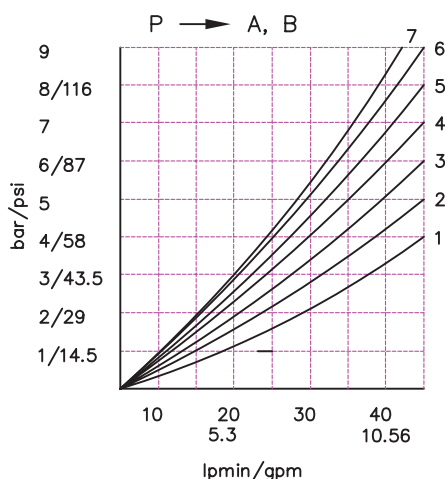
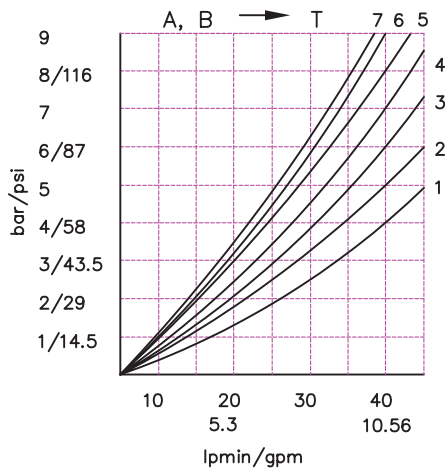
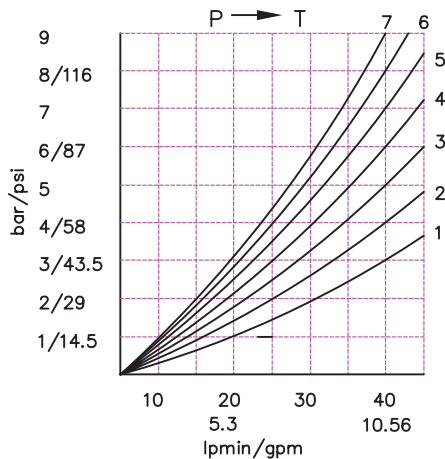
code		
C	"N" closed center	
C1	part for power beyond sleeve(carry over)	
C2	part for power beyond sleeve(carry over)	
—	"N" e c "T" without part for pressure carry over	
X	"N" e c "T" power beyond ever to tank	

Table 12

code	used connection ports ,
11	P1 ; T1
12	P1 ; T2
21	P2 ; T1
22	P2 ; T2

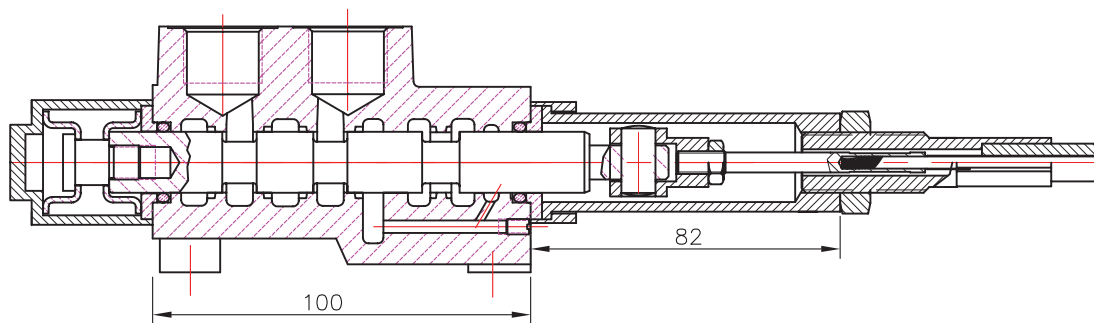


P40 directional control valve

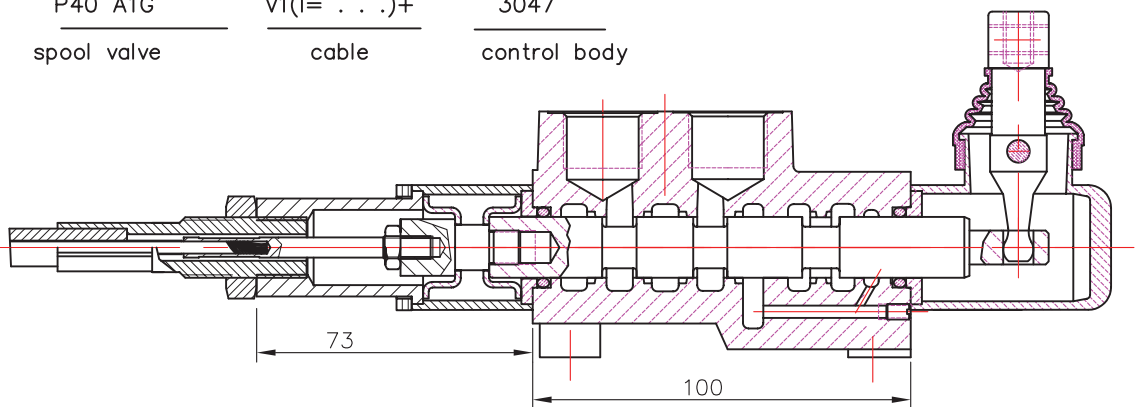


directional control valve P40

REMOTE CONTROLS



P40 A1G V1(I= . . .)+ 3047
spool valve cable control body



P40 A1G V2KZ1(I= . . .)+ 3047
spool valve cable control body

Cable "INDEMAR" Cod. IT 3056 /l=1.00; 1.50; 2.00; 2.50; 3.00 m/

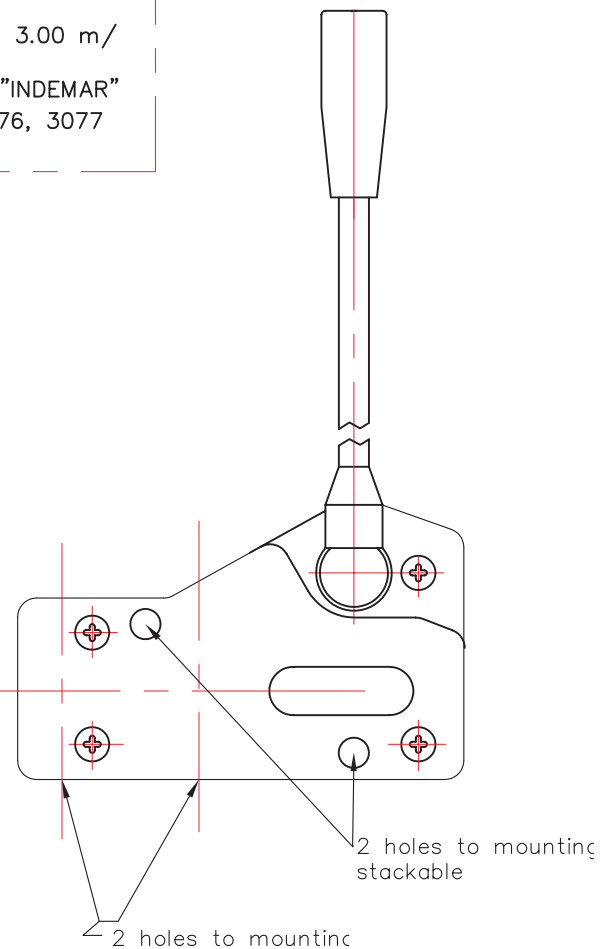
+control body "INDEMAR"
code 3047, 3076, 3077

Technical specifications

	3047	3076	3077
Stroke	13+13 mm	13+13 mm	13+13 mm
Max. load	45 kg	45 kg	45 kg
Level ratio	10:1	10:1	10:1
Lock in neutral	No	No	Yes
Antireverse lock	No	Yes	No
Body colour	Black	Black	Black
Cables type	Heavy Duty	Heavy Duty	Heavy Duty
Operating temperature	-40/+80C	-40/+80C	-40/+80C

High solidity controls for easy mounting on every type of distributor. They can be mounted stand alone or packed together.

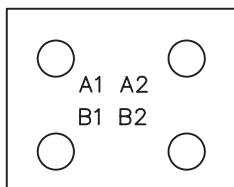
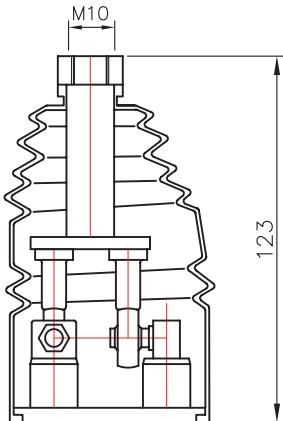
They use push-pull heavy duty cables that provide a positive smooth operating lever and are manufactured in three different models to meet different needs of Clients.



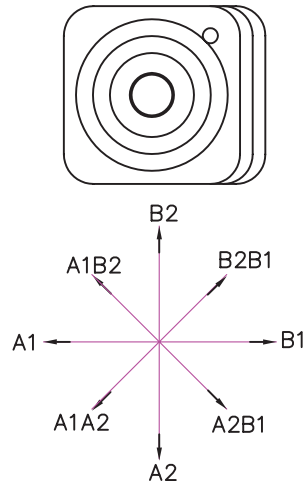
directional control valve P40

JOYSTICK "+"

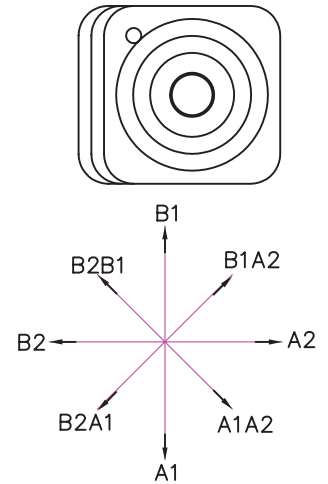
This control gives the possibility to operate, at the same time two spools with a "+" movement.



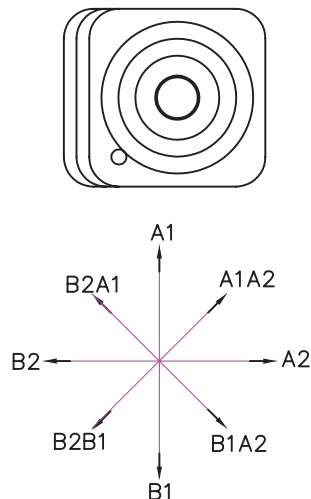
standard version 1



standard version 2



standard version 3



standard version 4

